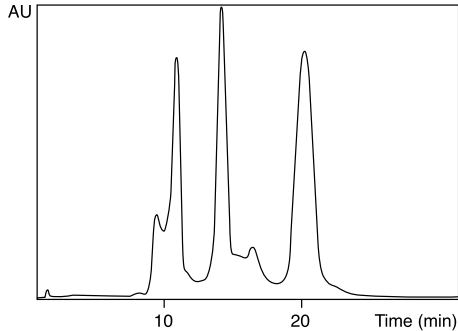
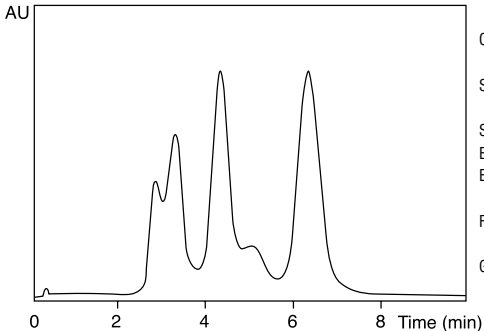


a) flow rate 4 ml/min



b) flow rate 13 ml/min



Column: SOURCE 30Q, 10 mm i.d. × 50 mm (4 ml)

Sample: Mixture of lactalbumin, lactoglobulin B and amyloglucosidase

Sample load : 1 mg/ml bed volume

Eluent A: 20 mM BIS-TRIS PROPANE, pH 7.0

Eluent B: 20 mM BIS-TRIS PROPANE, 0.5 M NaCl, pH 7.0

Flow rate: a) 4 ml/min (300 cm/h)

b) 13 ml/min (1,000 cm/h)

Gradient : 0 ~ 100 % B, 20 column volumes

SOURCE 30Qを充填したカラムを用いた流速による分離の違い