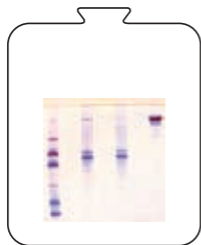
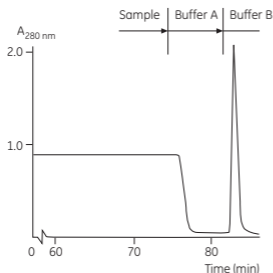


mouse IgG_{2a} (anti-gonococcus) の精製



I II III IV

- Gel: Protein A Sepharose 4 Fast Flow
- Sample: 5 litres cell culture supernatant with mouse IgG_{2a} and 0.5% fetal calf serum.
- Column: K 50/30 Fast Flow with bed dimensions 50 mm x 30 mm containing 60 ml Protein A Sepharose 4 Fast Flow.
- Flow velocity: 200 cm/h (66.6 ml/min), elution with reversed flow
- Starting buffer (A): 0.1 M Na₂HPO₄, pH 7.0
- Elution buffer (B): 0.1 M citric acid, pH 4.0
- Lane I: Low Molecular Weight Calibration Kit (Amersham Biosciences AB.)
- Lane II: Sample before purification
- Lane III: Unbound fraction
- Lane IV: Purified Mab fraction



The separation of mouse IgG_{2a} (anti-gonococcus) (work done on BioPilot System). Adjacent inserts show SDS-PAGE of the corresponding non-reduced samples. Samples were run on PhastSystem using PhastGel Gradient 10-15 and Silver staining.